

2

1

PCB Piezotronics Inc. claims proprietary rights in the information disclosed hereon. Neither it nor any reproduction thereof will be disclosed to others without the written consent of PCB Piezotronics Inc.

REVISIONS

REV	DESCRIPTION	DIN
B	ADDED VAR-02	44533

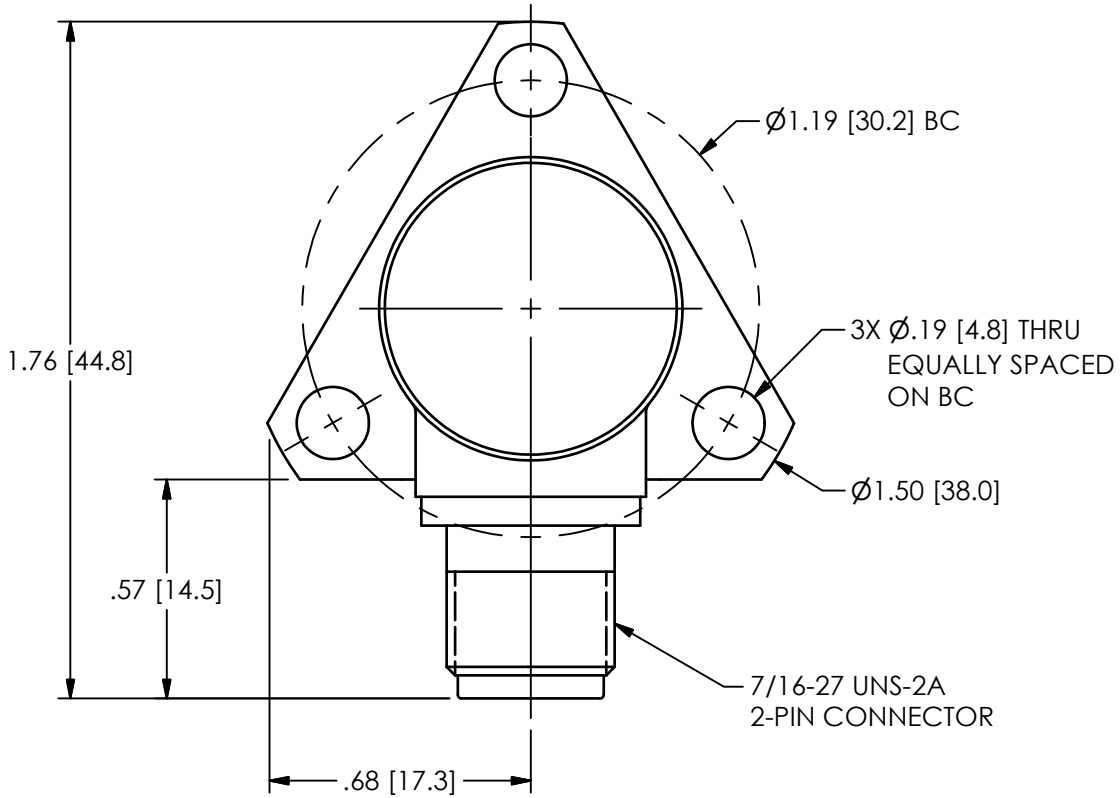
41341

RELATED DRAWING

NO MODIFICATIONS PERMITTED WITHOUT THE APPROVAL OF THE AUTHORIZED PERSON

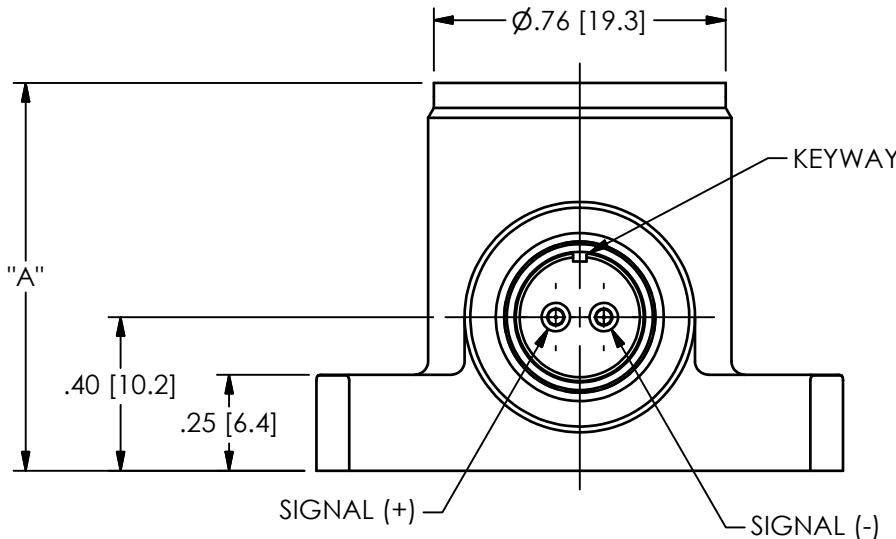
B

B



A

A



-02	1.40 [35.6]	EX357C72
-01	1.01 [25.7]	EX357C71
VAR	"A"	MODEL

UNLESS OTHERWISE SPECIFIED TOLERANCES ARE:

DRAWN		CHECKED		ENGINEER	
BB	9/2/15	ECB	9/2/15	GGG	9/2/15



3425 WALDEN AVE. DEPEW, NY 14043  
(716) 684-0001 E-MAIL: sales@pcb.com

CODE IDENT. NO.	DWG. NO.
52681	41341

SCALE: 2X	SHEET 1 OF 1
-----------	--------------

DIMENSIONS IN INCHES

DECIMALS XX  $\pm 0.03$   
XXX  $\pm 0.10$

ANGLES  $\pm 2$  DEGREES

FILLETS AND RADII  
.003 - .005

DIMENSIONS IN MILLIMETERS  
[ IN BRACKETS ]

DECIMALS X  $\pm 0.8$   
XX  $\pm 0.25$

ANGLES  $\pm 2$  DEGREES

FILLETS AND RADII  
0.07 - 0.13

TITLE  
OUTLINE DRAWING  
MODEL EX357C7X CERTIFIED  
HIGH-TEMPERATURE ACCELEROMETER

2

1

1

bbehinger 14:57 9/2/2015